

# MONTHLY MEMBERSHIP PROGRESS REPORT

LOCATION TEXAS

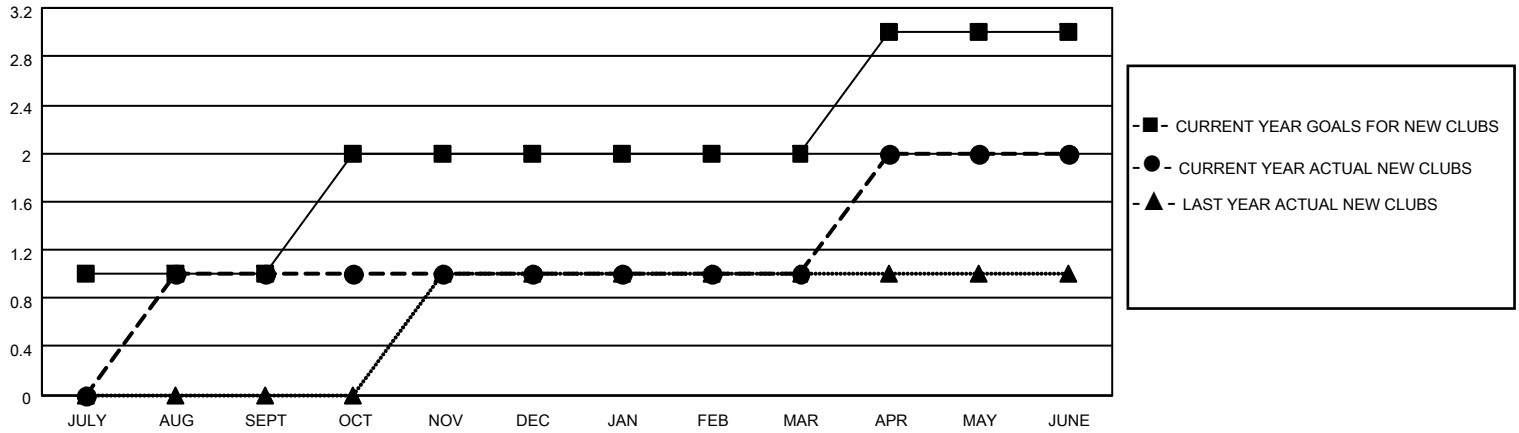
District 2 X1

Results as of: 6/30/2022

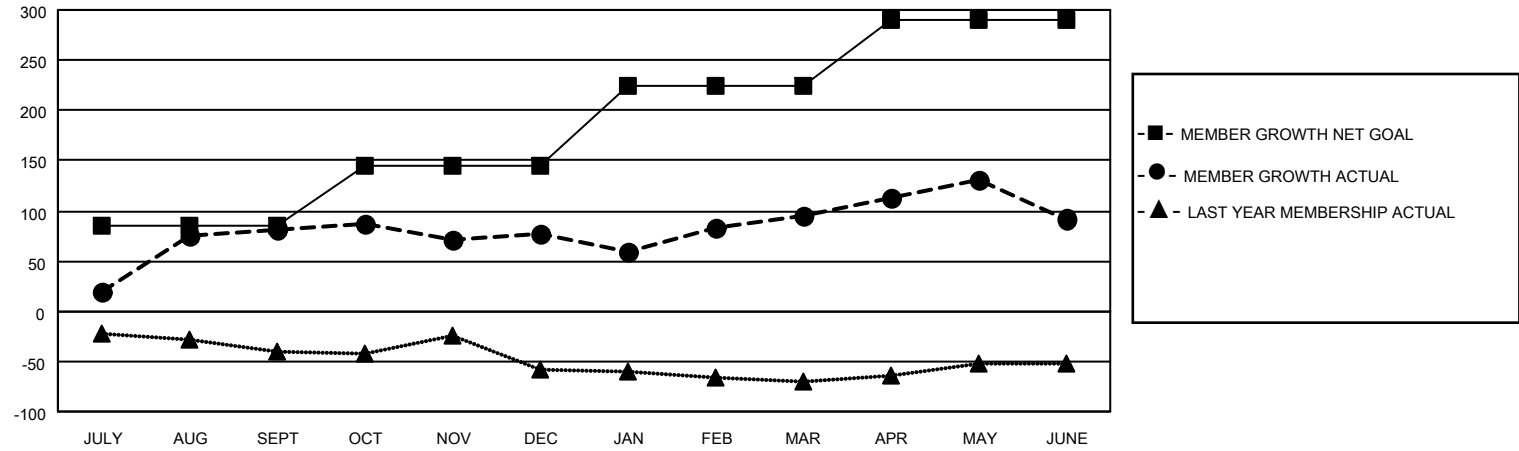
Clubs			
RESULTS FOR 2021-2022			
QUARTER	NEW CLUB GOAL	NEW CLUBS	DROPPED CLUBS
JULY/AUG/SEPT	1	1	0
OCT/NOV/DEC	1	0	0
JAN/FEB/MAR	0	0	0
APR/MAY/JUNE	1	1	0

Members			
RESULTS FOR 2021-2022			
QUARTER	MEMBER GROWTH NET GOAL	MEMBER GROWTH ACTUAL	DROPPED MEMBERS ACTUAL (including transfers)
JULY/AUG/SEPT	85	120	34
OCT/NOV/DEC	60	68	70
JAN/FEB/MAR	80	94	74
APR/MAY/JUNE	65	110	106

**GOALS AND ACTUAL NEW CLUBS CUMULATIVE**



**GOALS AND ACTUAL MEMBERS CUMULATIVE**



DROPPED CLUBS: 0	
<b>DROPPED MEMBERS</b>	
DECEASED	20
CLUB CANCELLED	0
OTHER	264
<b>TOTAL</b>	<b>284</b>

46 CLUBS OF 60 ADDED 1 OR MORE NEW MEMBERS

[CLICK HERE FOR CUMULATIVE MEMBERSHIP DATA](#)

<u>GENDER DISTRIBUTION</u>	
MALE	1,142 (62.78%)
FEMALE	676 (37.16%)
NON BINARY	1 (0.05%)
PREFER NOT TO ANSWER	0 (0.00%)
TOTAL FAMILY UNIT MEMBERS 277	
FAMILY MEMBERS PAYING HALF DUES 142	